

Belluz

CONCRETE & RENTALS LTD

1530 King's Hwy., Fort Frances, ON
807-274-9288

www.belluzconcrete.com

Camillo (Cam) Belluz along with his wife Josephine (Jo) started Cam Belluz Masonry Contractor in July 1967. Cam was a stone mason and bricklayer by trade and decided to start precasting sidewalk, patio blocks and concrete steps.

Gradually the business has grown to include septic tanks, well casing, manhole risers, barriers and equipment rentals. Cam loved to create things that no one else would attempt. Growing and continually expanding our products and markets contributes to our success.

Today Jo, along with sons Rob and Mike and a terrific staff continue the tradition of fine quality precast products that are built for our northern climate.

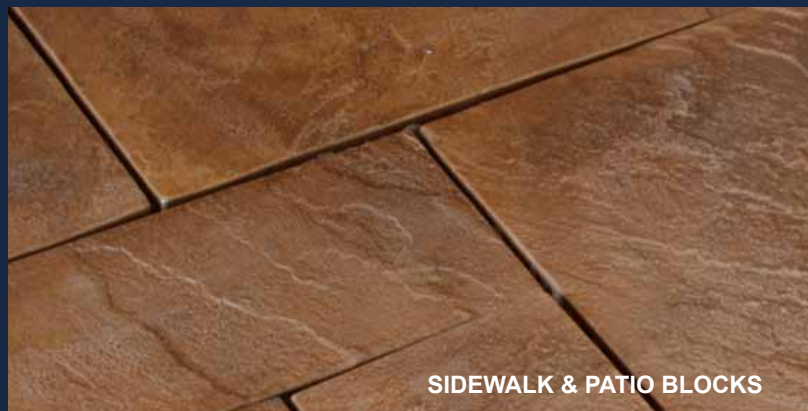
**Belluz Concrete makes
"Precast that Lasts"**



BARRIERS, BLOCKS AND PADS



SITE FURNISHINGS



SIDEWALK & PATIO BLOCKS



CUSTOM PRECAST STEPS



STORM, WASTE AND WELL



1530 King's Hwy., Fort Frances, ON

807-274-9288

Visit our website for

- **New Product Info**
- **Warranty Information**
- **Installation Guides**
- **Layout Patterns**
- **And Much More...**

www.belluzconcrete.com

Belluz Concrete Products are intended for walkways and patios only. Under no circumstances should they be used where they could incur vehicular traffic!

**Belluz Concrete makes
"Precast that Lasts"**

BASE PREPARATION

1. **Remove topsoil from the area to be paved.**
2. **Base materials should be placed in a 4"-6" layer. The thickness of base will vary with the type of soil sub grade and climate.**
3. **The base layer should be thoroughly compacted with enough water to aid compaction, increase density and also control dust.**
4. **Once the desired compaction has been achieved place a 1" bedding layer of concrete sand on top, ensuring that the base is level by using a string line or screed board.**
5. **Patios should be laid with slope to drain off rain water. This slope (away from buildings) is normally a drop of 1" for each 3 feet in length.**

LAYING THE PATIO

1. **Choose the design that you wish to lay, then starting in a corner carefully place the first slab in position and gently tap down using a rubber mallet.**
2. **The bedding layer of loose concrete sand allows for leveling the surface of each slab which may vary from piece to piece due to their texture.**
3. **Slabs may be laid with up to 1/2" joints and filled with dry sand on completion of installation.**

Under no circumstances should a mechanical compactor be used directly on the slab surface.

**We Make
Precast that
Lasts**



Floor your guests with a new patio!

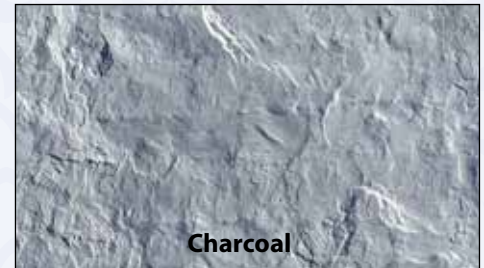
These wetcast pavers are perfectly textured to add elegance to any space. With just a few stones you can easily install new space. Pavers are available unsealed to allow consumers the choice to seal it themselves or match to existing surfaces.

Three stone sizes are currently available in two colours: Saddlewood and Antique Pewter.

Stone Sizes: 8" x 16", 16" x 16", and 16" x 24".

| Verona Series Wetcast Pavers | Steel Reinforced | Weight (lbs) |
|---------------------------------|---------------------|-----------------|
| 8"x16"x2" | Yes | 23 |
| 16"x16"x2" | Yes | 47 |
| 16"x24"x2" | Yes | 70 |

Colours Available:



Phone (807)274-9288 Fax (807)274-4322 email: belluzconcrete@shaw.ca

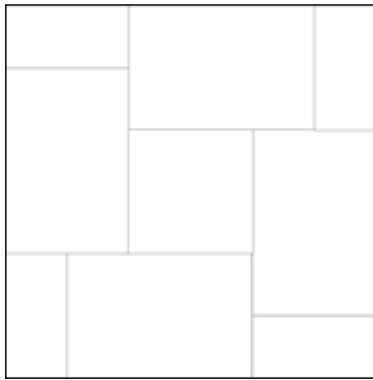


Verona Series

Wetcast Paver Patio Layouts

Try any of these patio layouts with our three stone sizes: 8" x 16", 16" x 16", and 16" x 24". With just a few stones you can easily install new space! Use the 4 foot square patio layout as the building block for ever expansive patio sizes.

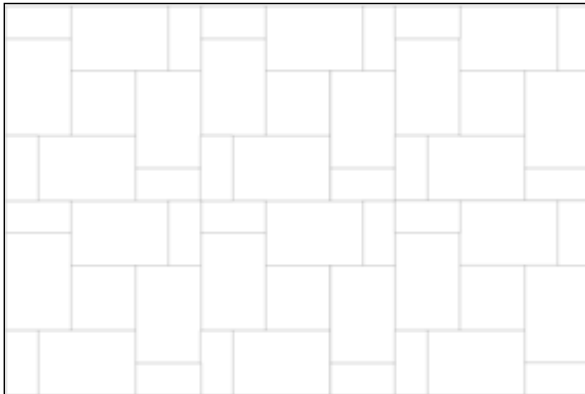
Number of Stones Required



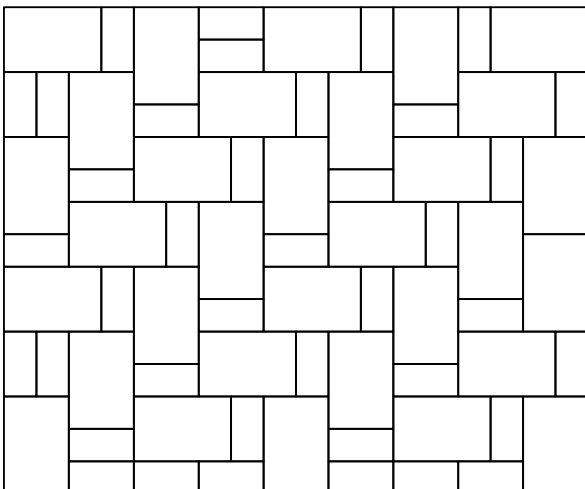
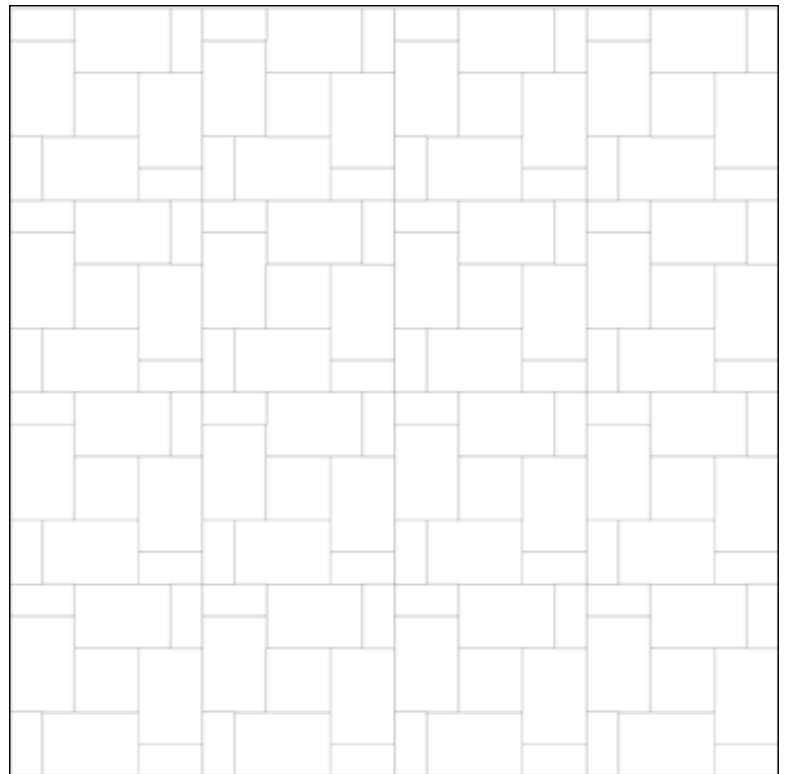
4' x 4' Patio

| Finished Patio Size | 8x16's | 16x16's | 16x24's |
|---------------------|--------|---------|---------|
| 4' x 4' | 4 | 1 | 4 |
| 4' x 8' | 8 | 2 | 8 |
| 8' x 8' | 16 | 4 | 16 |
| 8' x 12' | 24 | 6 | 24 |
| 12' x 12' | 36 | 9 | 36 |
| 16' x 16' | 64 | 16 | 64 |
| 10' x 12' | 39 | 0 | 32 |

8' x 12' Patio



16' x 16' Patio



10' x 12' Two Stone Patio

← Try a two stone layout to create this 120 sq ft patio.



1530 King's Hwy., Fort Frances, ON

807-274-9288

www.belluzconcrete.com

Belluz Concrete makes "Precast that Lasts"

While it is possible to make quality concrete products using either the dry cast or wet cast method, Belluz Concrete only uses the wet cast method. We feel that all of our wet cast products are generally superior to dry cast products for a number of reasons.

Our wet cast sidewalks and patio blocks have larger, coarser aggregate (stone) that helps increase the product's resistance to chipping and cracking. Our products are built for the North, perfect for extreme temperatures and our freeze and thaw seasons.

Belluz Concrete's products are steel reinforced. Without steel reinforcement the quality, durability and most importantly the strength of a unit can be significantly affected. Non-reinforced dry cast products look the same but you likely won't notice the poor quality until after its in place for several months and cracks begin to develop and it slowly deteriorates.

Our wet cast process gives us the ability to create sharp, detailed finishes for our products that can't be attained using the dry cast method. You will find our sidewalk and patio blocks have detailed texture and are smooth to the touch (perfect for those bare feet!).

SIDEWALK & PATIO BLOCKS

Patterns and sizes for every use. Many more varieties in stock.

Sizing chart on back page.



1530 King's Hwy., Fort Frances, ON 807-274-9288

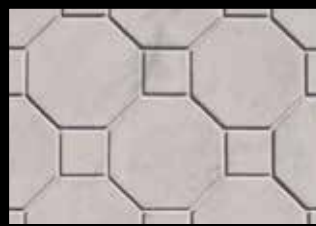
SIDEWALK & PATIO BLOCKS

www.belluzconcrete.com



Sunburst

24x24



Keyhole

24x24



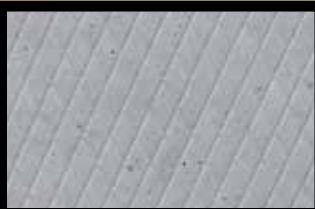
Flagstone

16x16



Tree Stump

18"



Big Diamond

12x12, 18x18, 18x24, 18x36,
20x20, 24x24, 24x30, 24x36



Small Diamond

18x18, 20x20, 24x24, 24x30,
30x30



Cobble

20"



Hedge Rock



Brick

18x18, 20x20, 24x24



Slate

18x18



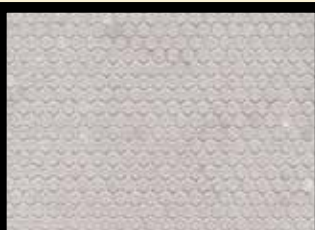
Big Foot

24x12.5



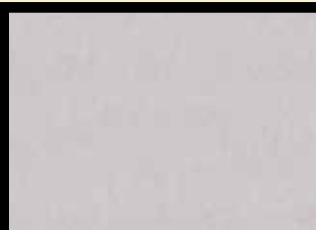
Return

24", 30"



Honeycomb

24x24, 24x30



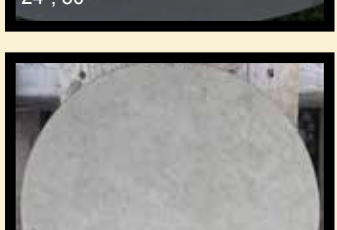
Plain

16x16, 36x36



Plain Round

18", 24", 30", 36"



Stucco Round

20"



Stucco

16x16, 18x18, 24x24, 30x30



Leaf Petal

18x18



Leaf Petal Round

18"



Crescent

16"

ALL WET CAST PRODUCTS ARE STEEL REINFORCED

Belluz

CONCRETE & RENTALS LTD

1530 King's Hwy., Fort Frances, ON

807-274-9288

www.belluzconcrete.com



Belluz Concrete makes "Precast that Lasts"

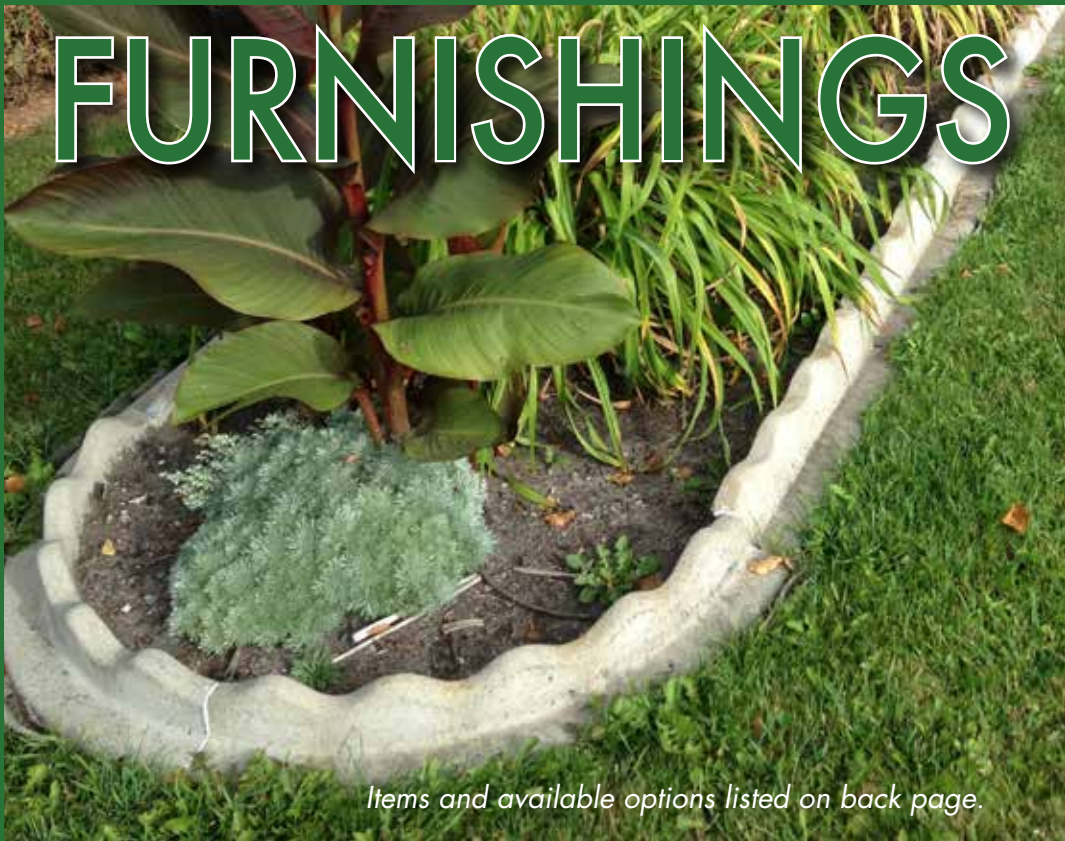
Our Concrete Picnic Tables offer a stylish new design for any setting. The heavy duty design makes these tables very durable and high quality, additional sealant available to connect the table top to base.

The natural strength of steel-reinforced concrete frames of our 7 ft. Park Benches provide an ideal base for the appealing heavy-duty wood seats and seat backs.

Park bench ends have inserts cast into the concrete and are supplied with Phillips truss head zinc plated bolts for attaching 2x4 seating material. Complete benches are assembled and with an extra leg, benches can be up to 12 ft. in length. Bench ends can be purchased separately.

Precast concrete lawn edging can be used to edge flower gardens, lawns, or trees. They can be adapted to many shapes when they are laid at different angles.

Precast concrete tree rings add a decorative touch to your landscape and are designed to protect trees or shrubs. They are durable and easy to install. Use it to make an attractive tree ring or curved plant bed border. Edging is a simple way to enhance your outdoor space while making your mowing and trimming chores easier.



SITE

FURNISHINGS

Items and available options listed on back page.



1530 King's Hwy., Fort Frances, ON 807-274-9288

SITE FURNISHINGS

www.belluzconcrete.com

SPLASH BLOCKS BICYCLE STANDS TABLES & BENCHES



Residential

24", 30", 36", 48"



Locking Ring

For Large Tires



Concrete Table & Seats



Industrial

48", 60"



For Small Tires



Concrete Seat

LAWN EDGING



"L"-Shaped Scallop

5"Hx24"L, 6"Hx36"L, 8"Hx48"L



Straight Scallop

24" Long x 8" or 10" High



Rolled Top

30" Length



Inside/Outside Corners

17x17x2



Stonehenge Edger



Inside/Outside Corners

13x13x2

TREE RINGS



Rolled Top T-Ring

30" Diameter



Flat Top T-Ring

36" Diameter



"L" Scallop T-Ring

40", 45", 60" Diameters



1530 King's Hwy., Fort Frances, ON 807-274-9288

STORM, WASTE AND WELL

www.belluzconcrete.com



Precast concrete septic tanks have been the accepted standard for well over 40 years for a variety of reasons:

- Concrete tanks offer the best value by outperforming plastic in both installation and backfilling costs.
- Concrete tanks do not require precise hand backfilling with pea gravel, while filling with water to equalize pressure.
- Concrete tanks do not lose their shape. Stick and stones will not puncture a concrete tank.
- Concrete tanks will not "float out" or "pop-up" from high ground water tables
- Concrete tanks are environmentally friendly. Precast septic tanks with their porous concrete walls create more heat in a tank by aiding the attachment of bacteria to the side walls of the tank and increasing bacterial growth in the tank. To a concrete septic tank owner this means less freezing tanks and fields in Ontario's harsh environment.

SEPTIC/TRICKLE 2 compartments

| SIZE | LENGTH | WIDTH | HEIGHT | TOTAL CAPACITY LTR | TO BOTTOM OF INLET | HOLE SIZE TO DIG |
|-----------|--------|-------|--------|--------------------|--------------------|------------------|
| 600 Gal | 73" | 62" | 65" | 2,700 | 55" | 6.5'x7' |
| 800 Gal | 98" | 66" | 65" | 3,600 | 53" | 7'x10' |
| 1,000 Gal | 102" | 66.5" | 69" | 4,500 | 57" | 7'x12' |
| 1,050 Gal | 114" | 77" | 60" | 3,975 | 47" | 7'x12' |
| 1,200 Gal | 125" | 72" | 63" | 5,400 | 53" | 7'x12' |
| 1,250 Gal | 122" | 77" | 59" | 4,732 | 46" | 7.5'x14' |
| 1,300 Gal | 126" | 66.5" | 69" | 5,800 | 57" | 7.5'x15' |
| 1,500 Gal | 158" | 72" | 66" | 6,750 | 53" | 7.5'x15' |
| 2,000 Gal | 144" | 76" | 85" | 9,100 | 76" | 7.5'x14' |

PUMP-OUT 3 compartments

All tanks meet the Ontario Building Code and CSA Standard B 66-00

| SIZE | LENGTH | WIDTH | HEIGHT | TOTAL CAPACITY LTR | TO BOTTOM OF INLET | HOLE SIZE TO DIG |
|-------------------|--------|-------|--------|--------------------|--------------------|------------------|
| 1,500 Pumpout | 158 | 72 | 66 | 6,750 | 53" | 7.5'x15' |
| 1,000+300 Pumpout | 126 | 68 | 69 | 5,800 | 57" | 7.5'x15' |
| 800+200 Pumpout | 102 | 68 | 69 | 4,500 | 57" | 6.5'x13.5' |

HOLDING 1 compartment

| SIZE | LENGTH | WIDTH | HEIGHT | TOTAL CAPACITY LTR | TO BOTTOM OF INLET | HOLE SIZE TO DIG |
|---------------|--------|-------|--------|--------------------|--------------------|------------------|
| 250 Holding | 67" | 43" | 45" | 1,125 | 32" | 5'x6.5' |
| 400 Holding | 72" | 46" | 63" | 1,800 | 53" | 5'x6.5' |
| 600 Holding | 73" | 62" | 65" | 2,700 | 55.5" | 6.5'x7' |
| 800 Holding | 98" | 66" | 65" | 3,600 | 53" | 7'x10' |
| 1,000 Holding | 102" | 66.5" | 69" | 4,500 | 57" | 7'x12' |
| 1,200 Holding | 125" | 72" | 63" | 5,400 | 53" | 7'x12' |
| 1,300 Holding | 126" | 66.5" | 69" | 5,800 | 57" | 7.5'x15' |
| 1,500 Holding | 138" | 72" | 66" | 6,150 | 53" | 7.5'x15' |
| 2,000 Holding | 144" | 76" | 85" | 10,900 | 76" | 7.5'x14' |



1530 King's Hwy., Fort Frances, ON 807-274-9288

STORM, WASTE AND WELL

www.belluzconcrete.com

SEPTIC TANK ACCESS RISERS

| DESCRIPTION | SIZE | HEIGHT |
|--|-------------|------------|
| Polylock Riser | 24" and 20" | 6" and 12" |
| Polylock Lid | 24" and 20" | 3' |
| Concrete Access Riser Square | 24" Square | Up to 24" |
| Concrete Access Riser Round | 24" Round | 12" |
| Concrete Access Riser Lid – Round/Square | 24" | 5" |



WELL CASINGS

| INSIDE DIAMETER | TOTAL HEIGHT | GALLONS /FOOT | TOTAL GALLONS |
|-----------------|--------------|---------------|---------------|
| 30" | 30" | 30 | 75 |
| 36" | 30" | 44 | 110 |
| 42" | 24" | 60 | 120 |
| 48" | 24" or 36" | 78 | 234 |
| 60" | 36" | 122 | 366 |
| 60" | 24" | 122 | 244 |

LIDS

| INSIDE DIAMETER | TOTAL HEIGHT |
|--|--------------|
| 30" Polylok Hatch and/or Concrete Hatch | 6" |
| 36" Polylok Hatch and/or Concrete Hatch | 6" |
| 42" Polylok Hatch and/or Concrete Hatch | 6" |
| 48" Polylok Hatch and/or Concrete Hatch | 6" |
| 60" Polylok Hatch and/or Concrete Hatch | 6" |
| Mastic Green Non Toxic – For Water – 1/2 up to 1-1/2 | |

DISTRIBUTION BOX

| DESCRIPTION | SIZE | HEIGHT |
|------------------------|---------------|--------|
| Distribution Box Small | 30" x 18 1/2" | 15" |
| Distribution Box Large | 30" x 24" | 15" |



MANHOLES

| DESCRIPTION | HEIGHT |
|-----------------------------|----------|
| 48" Imperial / 1,200 Metric | up to 4' |

GRADE ADJUSTMENT RINGS

| DESCRIPTION | HEIGHT |
|--------------|--------|
| 30" Diameter | 2" |

ALL PRECAST PRODUCTS ARE STEEL REINFORCED



BARRIERS, BLOCKS & PADS

1530 King's Hwy., Fort Frances, ON 807-274-9288

www.belluzconcrete.com

FOUNDATION PADS 12"-18"

| SIZE | THICKNESS | WEIGHT (lbs.) |
|---------|-----------|---------------|
| 12 x 12 | 4" | 48 |
| 14 x 14 | 4" | 66 |
| 16 x 16 | 4" | 85 |
| 18 x 18 | 4" | 108 |
| 18 x 18 | 6" | 161 |



PROPANE TANK PADS:

36" long, 10" wide, 3" thick



FOUNDATION PADS 20"-24"

| SIZE | THICKNESS | WEIGHT (lbs.) |
|---------|-----------|---------------|
| 20 x 20 | 4" | 135 |
| 20 x 20 | 6" | 200 |
| 24 x 24 | 4" | 195 |
| 24 x 24 | 6" | 290 |
| 24 x 24 | 10" | 480 |

CUSTOM ORDER PADS AVAILABLE.



Deck Block

Fits 4" post



Deck Block

Fits 6" post

DECK BLOCK

14" Width x 6" Height
with support for 4" opening

DOCK ANCHORS

also available.

CALL FOR PRICING.



Dock Anchors

28" W x 10" H, 540 lbs., galvanized hook



BARRIERS, BLOCKS & PADS

1530 King's Hwy., Fort Frances, ON 807-274-9288

www.belluzconcrete.com

CONCRETE BARRIERS/BLOCKS

FULL TRAFFIC BARRIER (TYPE M) OPSD #911.16

12'6" Long X 24" Wide X 32" High

3,810mm Long X 570mm Long X 570mm Wide X 815mm High (5,250 lbs)

JERSEY BARRIER:

10' Long X 24" Wide X 34.5 High – can come in 10', 8', 6', 5', 4', 3' lengths

LOCKWALL:

60" Long X 27" Wide X 36" High

V-INTERLOCK BLOCK:

6' Long X 2' High X 2' Wide

KNOB STYLE BLOCK:

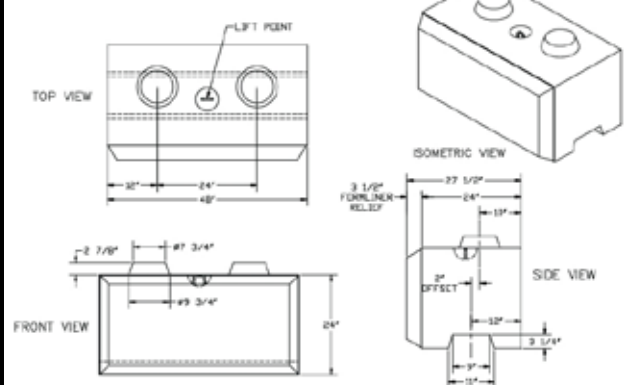
60" Long X 30" Wide X 30" High

LANDSCAPE BLOCK:

48" Long X 24" Wide X 24" High



LANDSCAPE BLOCK



PARKING CURBS

6' L x 8" W x 6" H

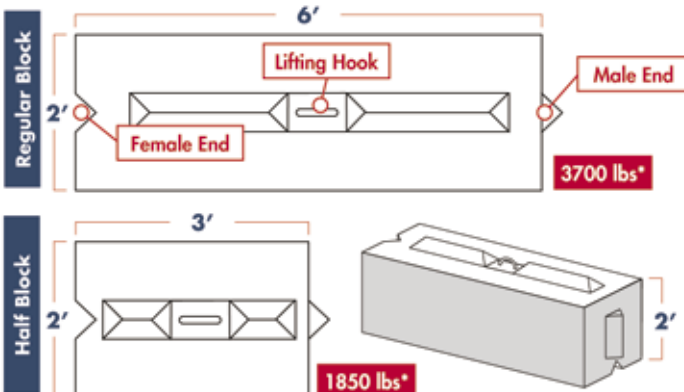
7' L x 8" W x 7" H

PINS AVAILABLE



V-INTERLOCK BLOCK

RETAINING ROCK SOLUTION



ALL PRECAST PRODUCTS ARE STEEL REINFORCED

Belluz

CONCRETE & RENTALS LTD

1530 King's Hwy., Fort Frances, ON

807-274-9288

www.belluzconcrete.com

BETTER THAN WOOD, BUILT TO LAST.

- Cost effective
- Long-lasting
- Maintenance-free
- Consistent plant cast quality
- Dependable delivery

Our steps are manufactured under the highest consistent quality standards using steel reinforcement for long life.

Each step unit tread has a hand-trowelled brush finish to give it a custom poured-in-place look.

Units are delivered and installed promptly for immediate use. No forming, pouring, wasted time or messy clean up. The result is you pocket the savings.

Every tread and riser is engineered to exact uniform dimensions to satisfy rigid building requirements. Safety bevelled steps reduce wear. The custom brush finish assures greater grip in slippery weather.



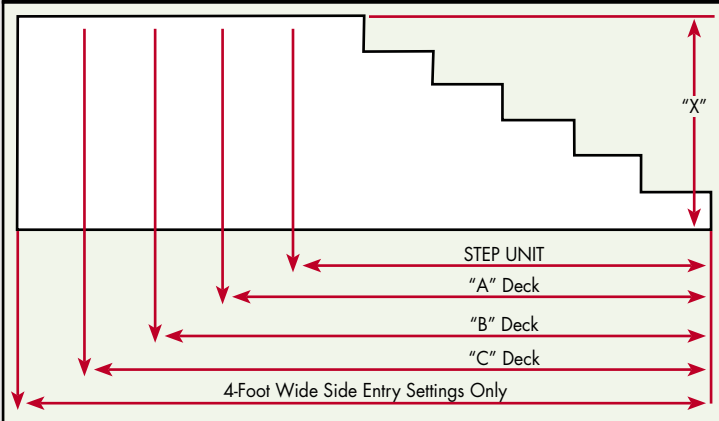


1530 King's Hwy., Fort Frances, ON 807-274-9288

CUSTOM PRECAST STEPS

www.belluzconcrete.com

COMMON COMBINATIONS AND DIMENSIONS



| STANDARD DEPTHS | | | | | | |
|-----------------|------------|----------------|------------|------------|------------|-----------------------|
| No. of Steps | "X" Height | Step Unit Only | A 36" Deck | B 42" Deck | C 48" Deck | D 60" Deck Side Entry |
| 1 | 7" | 14" | 36" | 42" | 48" | 60" |
| 2 | 14" | 26" | 48" | 54" | 60" | 72" |
| 3 | 21" | 38" | 60" | 66" | 72" | 84" |
| 4 | 28" | 50" | 72" | 78" | 84" | 96" |
| 5 | 35" | 62" | 84" | 90" | 96" | 108" |
| 6 | 42" | 74" | 96" | 102" | 108" | 120" |
| 7 | 49" | 86" | 108" | | | |

**WIDTHS OF THESE COMMON CUSTOM STEP UNITS MAY BE 48", 64" OR 72".
INFORMATION ON WIDER PORCH OR STEP MAY BE OBTAINED BY PHONING OUR OFFICE.**

QUALITY CUSTOM PRECAST ENTRANCES FROM 1 RISER TO 7 RISER HIGH, WITH OR WITHOUT PLATFORMS



Attractive:

Custom step units are architecturally designed for appearance and strength to enhance the finest of commercial and residential structures.

Carefree:

Custom steps eliminate the need for painting and replacing deteriorating lumber. Only the wrought iron railings require occasional paint.

Economical:

Custom step units are made of long-lasting concrete, which is reinforced with steel rods. Custom step production techniques also moderate cost.

Quick:

Custom step installation is a simple matter of lowering into place and levelling a single pre-cast unit. Removal of former steps takes only minutes.

Permanent:

Custom steps are made of quality materials. Harmful ashes, chemicals and salt are the only deterrent to lifetime use.

Safe:

Custom step risers are low enough for children and the elderly and tread depth is comfortable for adults. Surface features a non-slip safety finish.

Ornamental Iron Railing:

BelluzConcrete offers a complete variety of ornamental wrought iron and commercial railing to add additional safety and value to complete the look of your property which will meet all building codes.

Wrought iron railing can be painted black or white.

Precast Step Warranty Information:

Finish: Belluz Concrete will warranty the finish for one year after installation. The use of any ice melting material or rock salt will void this warranty.

Cracks: Due to our climate, Belluz Concrete will not guarantee any cracks not altering the structural integrity of the step unit. No other guarantees are expressed or implied.

Settlement: A concrete footer is strongly recommended to prevent settling of step unit. Belluz Concrete does not guarantee settlement of a unit placed on block footings.

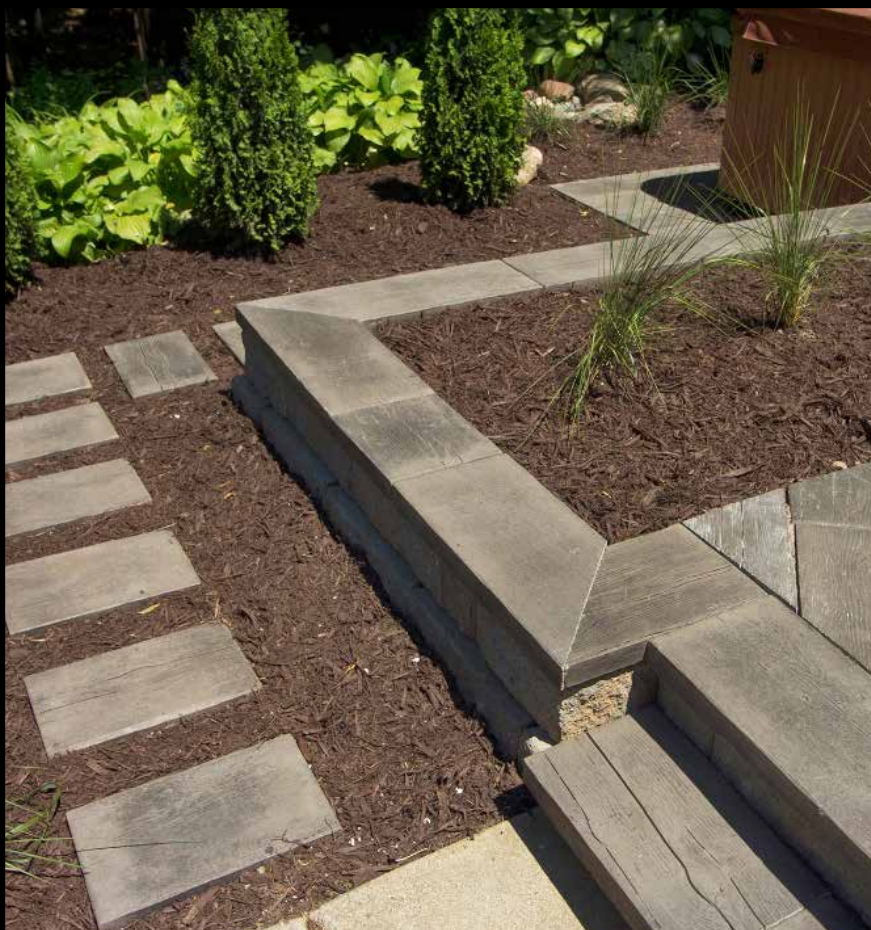


1530 King's Hwy., Fort Frances, ON 807-274-9288

CONCRETE BARNBOARD

www.belluzconcrete.com

COMMON COMBINATIONS AND DIMENSIONS






THE FINISHING TOUCH TO YOUR BACKYARD PARADISE!

Our concrete Barnboard offers the colour, texture and appearance of wood, and the durability of concrete, making it ideal for inventing new, imaginative outdoor spaces.

Our Barnboard is wet cast concrete and will never rot, warp, splinter or fade over time and it'll never need to be stained or sealed like wood, or crack like stamped concrete.

STANDARD SPECIFICATIONS

| Plank | Size L x W (in.) | Thickness (in.) | Face Area (ft) | Unit Weight (lbs) |
|--|---------------------|--------------------|-------------------|----------------------|
| Small  | 18 x 9 | 2 | 1.12 | 24 |
| Medium  | 24 x 9 | 2 | 1.50 | 33 |
| Large  | 36 x 9 | 2 | 2.25 | 52 |

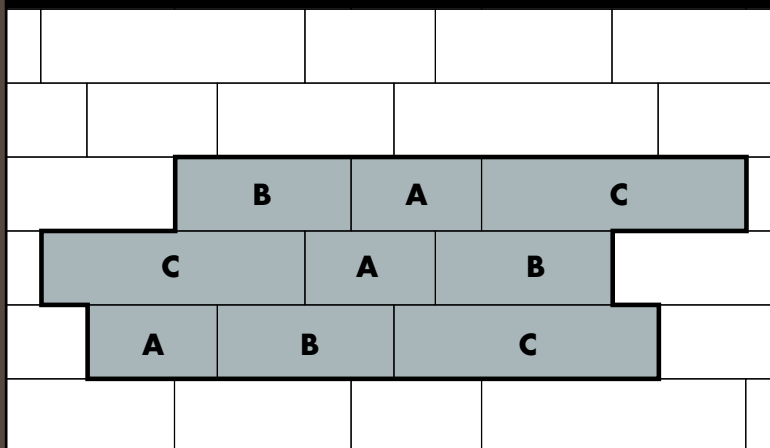


1530 King's Hwy., Fort Frances, ON 807-274-9288

CONCRETE BARNBOARD

www.belluzconcrete.com

PATTERN AND DESIGN IDEAS



STANDARD SIZES

18" X 9" X 2" – A

24" X 9" X 2" – B

36" X 9" X 2" – C

These slabs look so real, your friends and family will think they are actual wood planks. Quickly becoming one of our most popular choices, our Barnboard has a true-to-life wood look with the hard wearing durability of Belluz concrete.

YOU WON'T BELIEVE YOUR EYES! OUR BARNBOARD HAS A TRUE-TO-LIFE WOOD LOOK!



ESPRESSO



WALNUT



Our newest slabs have the weathered look of wood but with the strength of concrete. Plank thicknesses will vary; this is intentional to replicate real planks. Can be laid with all three sizes, or a selection of one or two at any size in a running bond pattern. To achieve the most desired look, Barnboard is intended to be laid in all three sizes with a 1:1:1 ratio. Perfect for a walkway or your patio.

To calculate the number of pieces, Area / 4.87 = how many pieces required.

ORDERING GUIDE

| Size Imperial | lbs./Piece | Sq.ft./Piece | Pieces/Pallet | lbs./Pallet |
|---------------|------------|--------------|---------------|-------------|
| 36x9x2 in. | 52 | 2.25 | 20 | 1,040 |
| 24x9x2 in. | 33 | 1.50 | 40 | 1,320 |
| 18x9x2 in. | 24 | 1.12 | 40 | 960 |

Belluz

CONCRETE & RENTALS LTD

1530 King's Hwy., Fort Frances, ON

807-274-9288

www.belluzconcrete.com

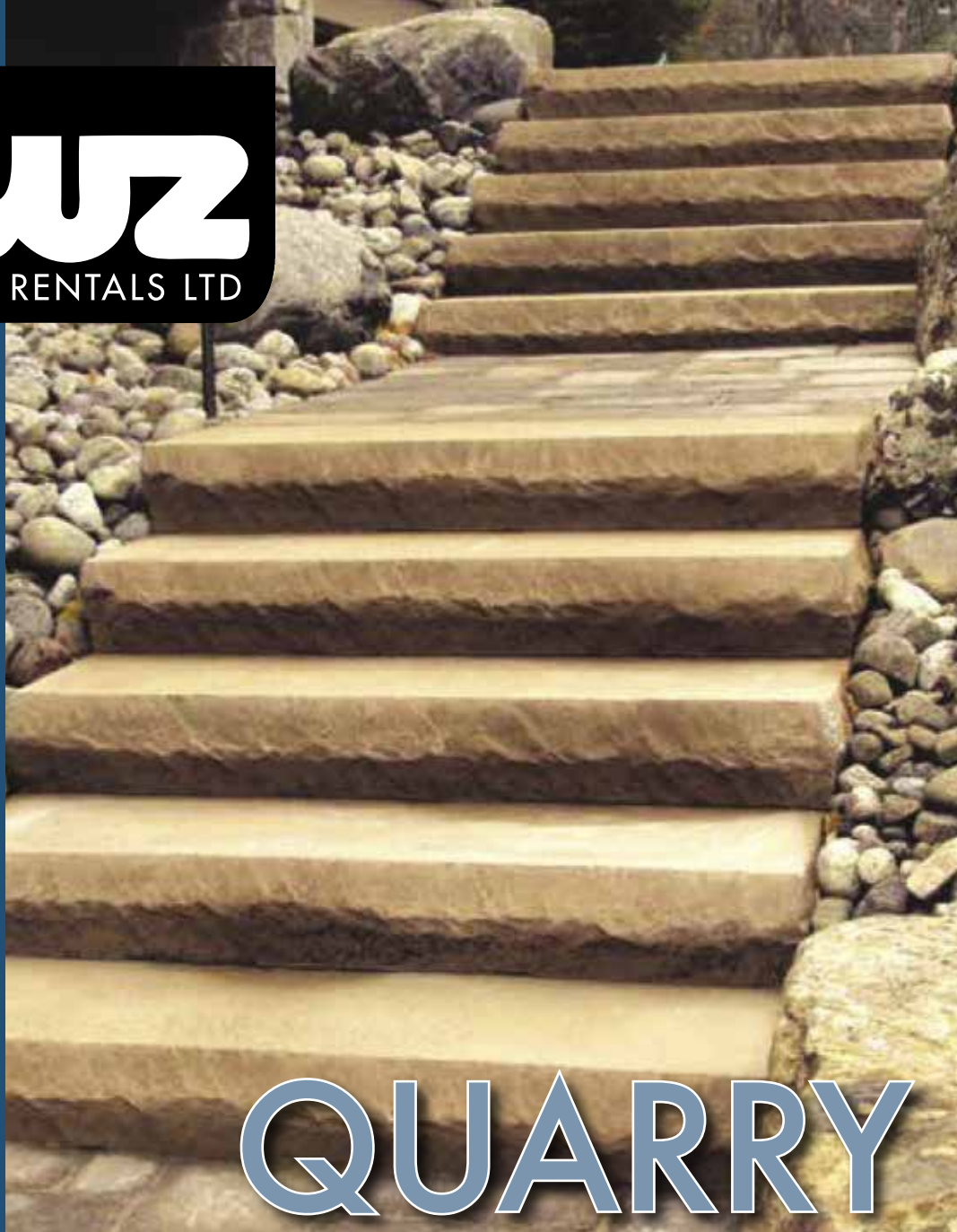
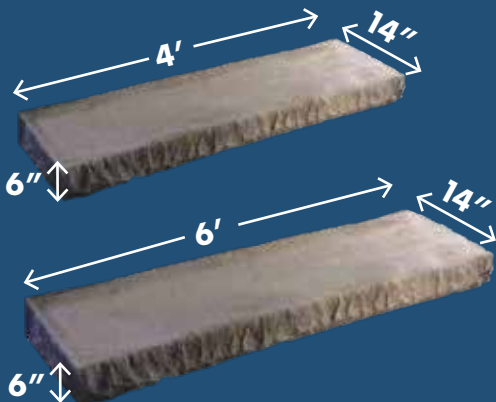
ECONOMICAL AND FUNCTIONAL.

- 4' & 6' LENGTHS AVAILABLE
- EASY INSTALLATION

Our Quarry Steps are made under the most stringent standards and are steel reinforced so that you need only enjoy.

With heavy Chiseled textures on three sides, these steps can be used with a retaining wall or just as easily stand out on their own. Ease of installation makes the Quarry Step an economical solution for steep side hills and other functional design elements. Quarry steps are sure to stand out above other traditional step installations.

- 4 foot and 6 foot available



QUARRY STEPS





1530 King's Hwy., Fort Frances, ON 807-274-9288

www.belluzconcrete.com

QUARRY STEP KITS

Stonewood Beam

Dimensions:

48" or 72" wide

Pieces per Pallet: 10

Belluz Concrete is now offering a complete Step Kit on one pallet. Hand hewn and modeled after quarry stone this unique step kit is easy to assemble, steel reinforced and can go together without any mortar or glue required. Get the look in a variety of colors to match your tastes.

Our Quarry Step Kit was designed to easily expand. Add more 16" steps either individually or with additional kits.

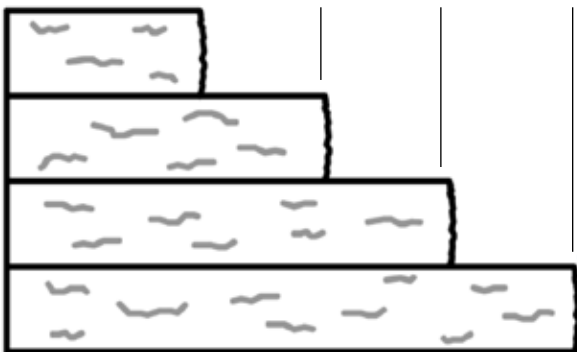
Each 16" step overlaps 2" giving you a robust 14" step tread surface.

Kit available in 4' wide & 6' wide.



Length: 16" 30" 44" 60"

6"





1530 King's Hwy., Fort Frances, ON 807-274-9288

NORTHLAND & BOULDER FIREPITS

www.belluzconcrete.com

ADD LAYERS TO INCREASE HEIGHT!



ASSEMBLES IN LESS THAN 20 MINUTES!

OUR NORTHLAND FIRE PIT WILL MAKE ANY OUTDOOR SPACE MORE WELCOMING, COMFORTABLE AND FUNCTIONAL.

Gather around a crackling fire of warmth and flickering light and toast up some marshmallows. Belluz Concrete offers concrete fire pits that allow you to build up "rings" of four durable interlocking pieces of concrete that creates a secure fire area in your backyard. Select the desired amount of rings to go with the 2" tall finishing capstone to achieve the perfect height for your fire pit.

STANDARD DIMENSIONS

Inside Diameter:

Outside Diameter: 48"

Height: 14"

Weight: 1,200 lbs.

This extra large fire pit has a larger burn area than our Northland FirePit, making your night time fires more beautiful than ever. The Traditional Boulder FirePits are deeper and more pronounced than most other fire pits, rendering it more realistic than anything else like it.

ASK ABOUT OUR FIRE PIT KITS!

STANDARD DIMENSIONS

Inside Diameter: 31"

Outside Diameter: 44" - 48"

Rings: 4" H x 5" W (4/row)

Capstone: 2" H x 7" W (4/row)

Weight: 900 lbs.



The mix design of the concrete has been perfected to withstand the heat of your fires. Add the optional custom steel ring with flange that will make an air void to prevent direct contact between the blocks and flames. The large capstone naturally creates a 10" buffer zone between you and the fire. Long story short, our Northland Fire Pits are safe and built to last!

- Comes in coloured finishes
- All season and weather resistant
- Optional dome spark catcher

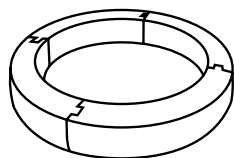
OPTIONAL METAL INSERT FOR ADDED PROTECTION



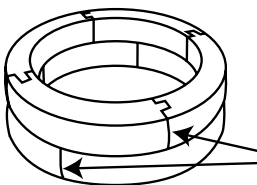
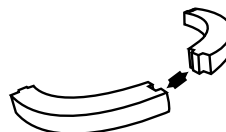
BOULDER FIREPIT

NORTHLAND FIREPITS

INSTALLATION INSTRUCTIONS

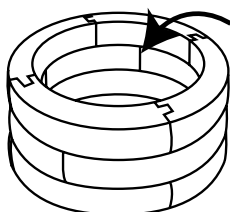


1. Lay out the first course interlocking the blocks making sure that it is level.



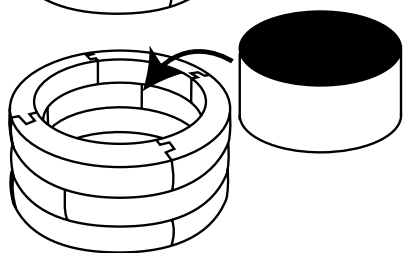
2. Place the second and third layers on top of the first keeping the joints staggered.

Joints are staggered



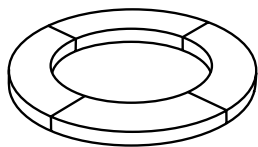
SAND

3. Empty the sand inside the firepit spreading it evenly.

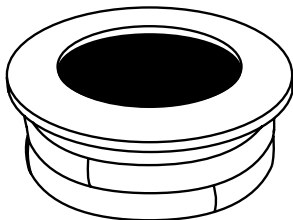


4. Insert the steel ring on top of the sand and pressing down all the way. The top of the ring will be higher than the top of the blocks.

Optional Steel Ring

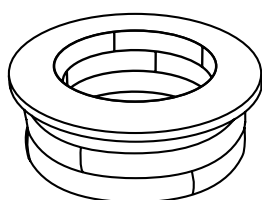


5. Place the caps around the top of the firepit blocks. They may need to be shimmed to ensure a level surface.

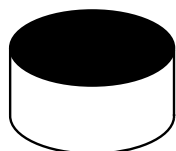


NOTE: The metal ring should be high enough to protect the top caps of the firepit. If it is not high enough be sure to build up the base layer of sand inside the centre of the firepit to raise the ring higher.

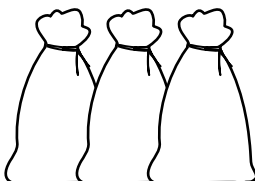
FIREPIT KITS AVAILABLE



+



+



=

FIREPIT KIT

Everything you need to
build a firepit.



1530 King's Hwy., Fort Frances, ON

807-274-9288

www.belluzconcrete.com

**For the
#weekendwarrior
a complete patio
on ONE Pallet!**

**Introducing our Newest Product:
"Patio on a Pallet".**

**This product consists of
Lakestone pavers in various
sizes and colours to make unique
designs, NO CUTTING NEEDED!**

**This gives the homeowner or
contractor the opportunity to
purchase a 10'x10' patio on a
single pallet.**

**No need to figure out the design
on your own, an easy to follow
diagram is included in each
pallet.**

**You can easily combine multiple
patios together to create a
larger outdoor living space.
Choose from one of our popular
patterns. Colours available are
Cedar, Charcoal and Natural.**

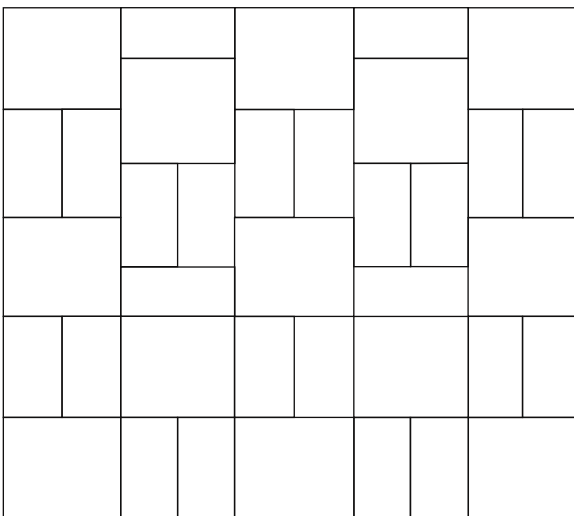
A photograph showing a close-up of a patio area. In the foreground, there are large, rectangular, light-colored stone pavers with a natural, textured surface. To the right, a curved wall made of stacked, irregularly shaped stones in shades of brown and tan is visible. The background is a solid purple color.

**PATIO ON
A PALLET
KITS**

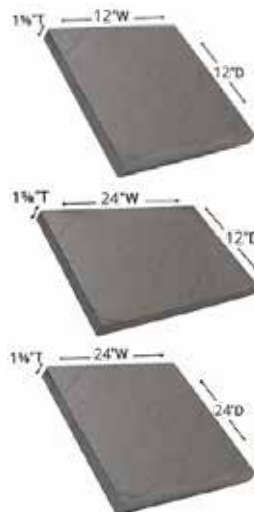


10' x 10' Basket Weave Pattern (100 sq. ft. – 2 Piece)

(24) - 12" x 24" (13) - 24" x 24"

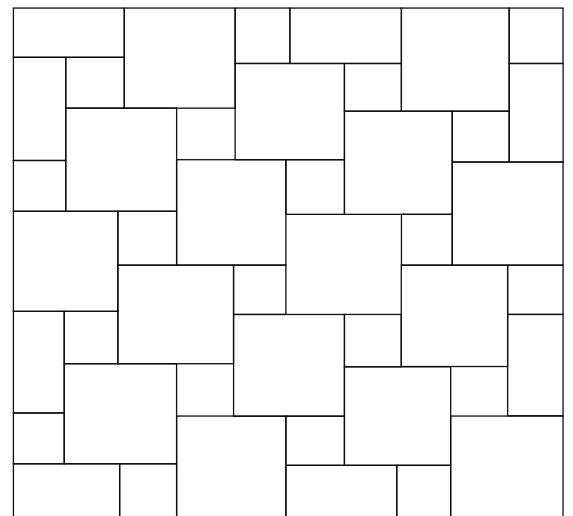


AVAILABLE SIZES:



10' x 10' Ashlar Pattern (100 sq. ft. – 3 Piece)

(16) - 24" x 24" (8) - 12" x 24" (20) - 12" x 12"



AVAILABLE COLOURS:



Charcoal



Natural



Cedar



1530 King's Hwy., Fort Frances, ON 807-274-9288

www.belluzconcrete.com



STONEWOOD BEAM

- Handcrafted, no cutting required
- Unique textures

Our Stonewood Collection is a hand crafted, original, only from Belluz Concrete.

These 4' long, steel-reinforced beams are perfect for step, retaining walls, raised gardens, flower boxes, firepits or just about any other use for wood outdoors.

Get the look of real wood without the worry of rot or replacing every few years.

Dimensions: 6"x8"x48" 198 lbs. each



- Four different textures
- Various shapes and sizes
- Flat bottoms for easy install
- Mix and match colours

Designed and molded from real country field rocks our Hedge Rock Stepping Stones bring rustic natural stone look and feel with complete colour customization to compliment your walk. These large stepping stones are flat bottomed for easy placement.



The look of naturally weathered stone in concrete. With its distinctive height and rugged texture, the Stonehenge edger is perfect for defining a flower bed, mowing path along the edge of the lawn.

This stone could also be ideal in creating a circular or small flower garden retaining wall, around patios or walkways. Easy to install, the design allows for turning square corners or curves.